



# Beaufort County Public Works Stormwater Infrastructure Project Summary

Project Summary: Leo Green Road Outfall

Project #: 2005-088                      Completed: Dec-09

Narrative Description of Project:  
Cleaned out 660 L.F. of outfall ditch.

## Material Cost, Rental Equipment Summary, and Labor

Material	Unit	Cost/Unit	Qty	Cost
Pin Flag	each	\$0.06	7.0	\$0.42
Gas	gallon	\$2.40	5.0	\$12.00
Diesel	gallon	\$2.41	45.0	\$108.45
Labor	hours		76.0	\$2,595.23
<b>Total Cost of Materials, Rental Equip., and Labor</b>				<b>\$2,716.10</b>

Note: Labor cost includes the employee's salary plus fringe benefits.

## Equipment Cost

Item	Asset	Cost/Hour	Hrs.	Cost
Komatsu Mini Excavator	23000	\$18.65	8.0	\$149.20
Dump Trucks		\$16.68	20.0	\$333.60
Pickup Trucks		\$4.17	19.0	\$79.23
<b>Total Equipment Cost</b>				<b>\$562.03</b>

Cost/hour excludes fuel cost.

Total Cost:                      \$3,278.13

## Site Photographs

Before



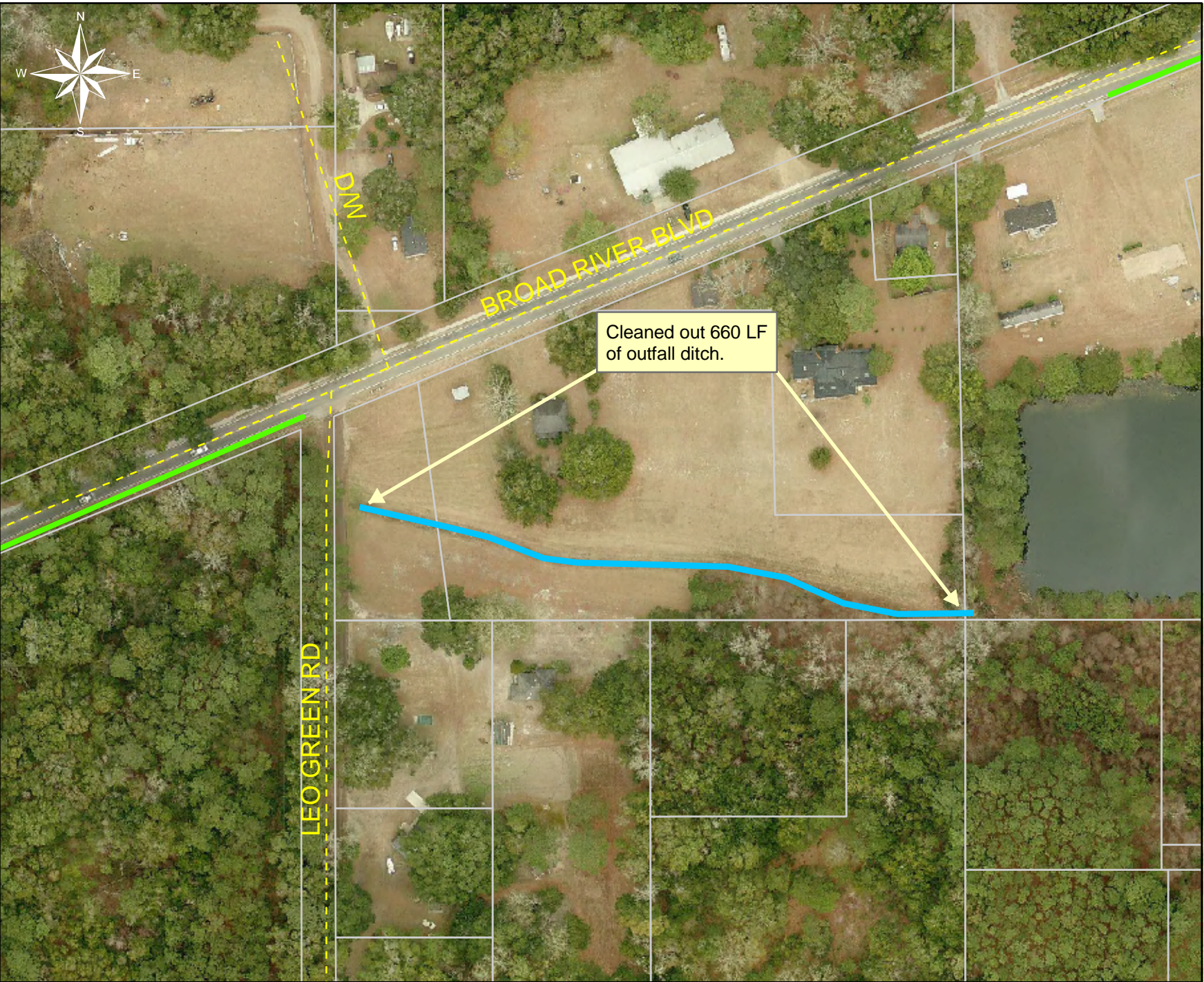
During



After







Project: Leo Green Road Outfall

Activity: Drainage Maintenance

Project #: 2005-088

Township: Port Royal Island

Completed: December 2009

**Legend**

**Drainage Type**

River

Stream

Outfall

Lateral

Roadside

Roadside Pipe

Crossline

D/W

Access

Piped

Bleeder



1 inch equals 141.15 feet